

ClubCar

CARRYALL 7000

HARDWORKING HERO: JOB 611

Heavy Lifter. With a whopping 454 kg (1000 lb) capacity bed that's nearly 179 cm (6 ft) long, the Carryall 700 will win your fleet's Iron Man contest hands down. And, with best-in-class ground clearance and turning radius, it navigates rough terrain and tight spaces with ease.



HARDWORKING HERO: JOB 301

Keep on haulin'. Whether you're planning the day's work or working the day's plan, the Carryall 700 is ready for whatever's on your to-do list. With a strapping 3/4 ton total vehicle capacity and a bed that's nearly 179 cm (6 ft) long, the vehicle hauls. It delivers truck-like performance, comfort and power at utility vehicle pricing.



+32 2 746 1200

www.clubcardealer.com/HardworkingHero

A THOUSAND JOBS. ONLY ONE
CARRYALL



®

CARRYALL 700



VERSATILITY & RELIABILITY

Payload. Total vehicle capacity of 680.3 kg (1500 lb).

Best-in-class EFI powertrain: The vehicle's 10.3 kW (14 hp) rated Subaru overhead cam engine with electronic fuel injection improves fuel efficiency as much as 50%. It also has a filter-less oil system, an optional limited slip differential for improved traction, and a side fuel tank. Beat that!

Improved charging. The industry's only standard on-board high-efficiency charger with cord retractor. This new system operates on voltages around the globe, and tolerates voltage swings that would shut down lesser chargers.

More durable than steel. Carryalls are built on Club Car's exclusive lightweight, rustproof, air-craft-grade aluminum frame that's designed to be stronger than steel. Unlike competitive steel frames, it resists corrosion and retains resale value.

Fit-to-task utility. A one-of-a-kind bed box with an integrated track-based attachment system, optional tool holders, bed dividers and cargo tie downs increases versatility and saves floor space. So you can do more with less.

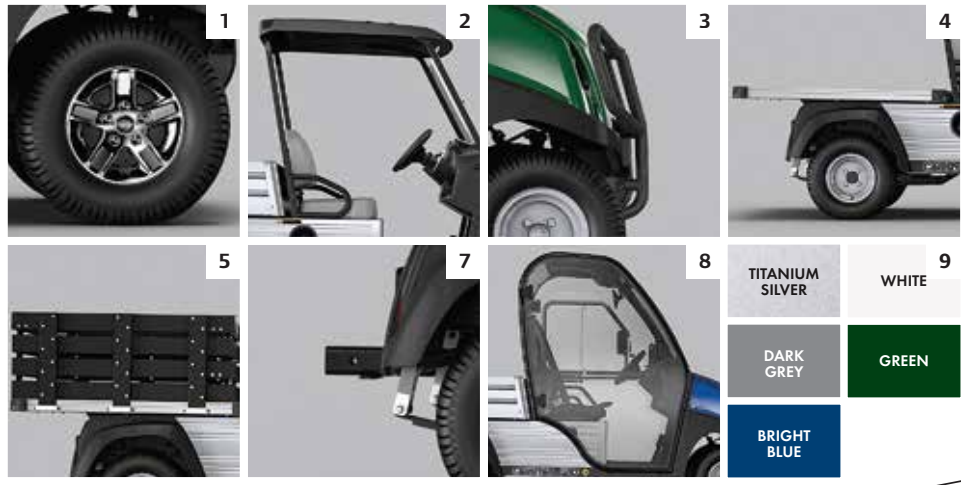
Improved ergonomics. Cockpit style interiors with restyled hip restraints make the vehicles easier to enter and exit. And an ergonomic dash puts the key switch, shifter and gauges at the driver's fingertips.

The best warranty in the industry. The industries longest standard battery, powertrain and bumper to bumper warranty.

CATEGORY	ELECTRIC	GASOLINE
Engine/Motor Type	48V DC	Subaru, 4-cycle
Controller	500 Amp - Solid State	
Displacement		404 cc
Cylinders		Single
Valving		Overhead Cam
Cooling		Air Cooled
Horsepower (Rated)	2.7 kW (3.7 hp) rated, Peak 14.9 kW (20 hp)	10.3 kW (14.0 hp) rated @ 3600 RPM per SAE J1940
Max Torque	96.2 N-m (71 ft-lb) rated @ 1450 RPM	27.0 N-m (19.91 ft lb) rated @ 2400 RPM
Lubrication		Splash Lubrication
Governor		Ground Speed
Transmission	Direct drive, double reduction helical gear	Continuously Variable Transmission (CVT)
Gear Selection	Forward/Neutral/Reverse	
Gear Ratio	12.32:1	11.47:1 forward; 15.63:1 reverse
Ignition		Electronic
Battery	Eight 6V Flooded Lead Acid	12V 500 CCA 105min Reserve
Charger	DeltaQ QuIQ (1KW High Frequency)	
Headlights	Two 37.5 Watt Halogen	
Fuel Delivery System		Electronic Fuel Injection (EFI)
Capacity		17.4 L (4.6 gal)
Steering Mechanism	Self-adjusting Rack and Pinion	
Suspension (Front)	Independent leaf spring with dual hydraulic shocks	
Suspension (Rear)	Independent leaf spring with dual hydraulic shocks	
Brakes	4-wheel Mechanical Drum	
Park Brake	Foot Operated, Multi-lock	
Body (Front & Finish)	ArmorFlex with automotive paint/clearcoat	
Body (Rear)	Aluminum	
Tires (Front)	20 x 10-10, 6-ply	
Tires (Rear)	20 x 10-10, 6-ply	
Wheelbase	251.7 cm (99.1 in)	
Overall Height	119.6 cm (47.1 in)	
Overall Length	349.3 cm (137.5 in)	
Bed L x W x H (Cargo Box)	171.7 x 126.5 x 26.7cm (67.6 x 49.8 x 10.5 in)	
Ground Clearance (Differential)	14.2 cm (5.6 in)	13.2 cm (5.2 in)
Track Width (Front)	92.9 cm (36.6 in)	
Track Width (Rear)	100.3 cm (39.5 in)	
Max Width (w/o Mirrors)	127.7 cm (50.3 in)	
Total Vehicle Capacity	680.3 kg (1500 lb)	
Bed Load Capacity	453.5 kg (1000 lb)	
Towing Capacity	680.3 kg (1500 lb)	
Combined Gross Vehicle Capacity	680.3 kg (1500 lb)	
Speed	24-27 km/h (15-17 mph)	
Warranty	4 yr limited battery warranty 3 yr limited powertrain/frame 2 yr limited remaining vehicle	3 yr/3000 hr limited powertrain/frame 2 yr limited remaining vehicle

ACCESSORIES & OPTIONS

1. Wheel Cover
2. Canopy
3. Brush Guard
4. Flatbed
5. Stakeside
6. Cargo Box (Back Page, Top)
7. Rear Receiver Hitch
8. Complete Cab
9. Vehicle Colors
10. Range Cab (Not Shown)



©2013 Club Car LLC. Club Car believes the information and specifications in this piece of literature were correct at the time of printing. Specifications, standard features, options, fabrics and colors are subject to change without notice. Some features may be unavailable when your vehicle is built. Some vehicles are pictured with options that may be available at extra cost or may not be available on some models. Ask your dealer about the availability of options and verify that the vehicle you ordered includes the equipment you ordered. There are no warranties, expressed or implied, contained herein. See the Limited Warranty in the owner's manual or write to: Club Car, PO Box 204658, Augusta, GA 30917. The company reserves the right to make design changes without obligation to make these changes on previously sold units or systems. CCN 18040044 Rev 11/13